

Double Leaf EI₂90 / T90 Fire Resistant Acoustic Door

| | | |
|---------------------------------|--|--------------------------------------|
| Fire Protection | EI₂90 / T90 | tested acc. to EN 1634-1 |
| Smoke Control (optional) | S_a, S₂₀₀ / RS | tested acc. to EN 1634-3 |
| Self-Closing (optional) | up to C5 | tested acc. to EN 1191 |
| Sound Insulation | up to R_{w,P} 40 dB | tested acc. to EN ISO 10140-2 |

Certified in accordance with DIN EN 16034 / 14351-1 / 13241

General Building Approval as T90-2 (-RS) -FSA acc. to DIN 4102-5 / DIN 18095

Optional Audited Additional Functions

| | | |
|------------------------------|------------------------|--------------------------------------|
| - Burglar Protection | RC2/RC3/RC4 | tested acc. to EN 1627 |
| - Bullet Resistance | FB4/FB6 | tested acc. to EN 1522 |
| - Air Tight | up to class 4 | tested acc. to EN 1026 |
| - Rain- and Fire-Water Tight | class 6A | tested acc. to EN 1027 |
| - Wind Load Resistance | up to class C5 | tested acc. to EN 12211 |
| - Blast Resistance | up to 20 kPa | tested acc. to EN 13124-1 |
| - Explosion Protection | up to zone 1/21 | acc. to EN 1127-1 or ATEX 2014/34/EU |
| - Stainless Steel | | |

Range of Dimension

Range of Dimension for Doors **Width** from 1375 mm to 3000 mm
Height from 1750 mm to 3000 mm

Range of Dimension for Hatches **Width** from 1250 mm to 1375 mm
Height from 500 mm to 1750 mm

Technical Specification and Tender Text

| | |
|---|---|
| Product: | EI₂90 / T90 double leaf fire resistant acoustic door brand Buchele tested acc. to EN 1634-1 and EN ISO 10140-2 |
| Door Type: | PLANE Line PL 902 BASIC |
| Sound Insulation R_{w,P} | 40 dB |
| Structural Opening: | x mm |
| Door Leaf: | Double-walled, planar 70 mm thick steel door without hinge embossing, three sides rebated with thick rebate Without bottom stop. Special insulating inserts fully laid-in and glued. Passive leaf with multi-chamber sealing profile in the middle rebate. Securing pin screwed in door leaf rebate. Drop sealing system. |
| Threshold: | Floor bracket as separation sill. Surface galvanized and welded to the frame. |
| Frame: | 3-sided circumferential rebated corner frame with visible black coated intumescent material in rebate. High-quality multi chamber sealing profile adjustable fixed in the three- sided groove. |

| | |
|----------------------|--|
| Hinges: | Three-part, height adjustable construction hinges with hinge pin retention and ball bearing spacer ring for smooth door movement. |
| Door Closer: | 2 pieces of door closer system with standard arm acc. to EN 1154 silver coloured mounted on hinge side. Door coordinator and 2 pieces of 30 mm high brackets with plastic roller. |
| Fitting: | Active leaf with mortise lock with latch lever function acc. to EN 12209 (prepared for installation of a profile cylinder lock, provided by customer). Door handle set in acc. to EN 1906 fixed pivoted synthetic material black in U-shape with rounded short-plate. Passive leaf with self-locking concealed shoot bolt lock with upper switch lock. |
| Surface: | Door leaf and frame galvanized und primed with 2K-PUR primer (Very High Solid) similar RAL 7035. |
| Installation: | masonry ≥ 175 mm concrete ≥ 100 mm areated concrete ≥ 200 mm mounting wall F60 ≥ 125 mm |

Alternative: PLANE Line PL 902 PREMIUM with flush mounted optics

| | |
|---------------------|---|
| Frame: | 3-sided circumferential rebated PLANE Line special corner frame for flush mounted optics on hinge side. With visible, black coated intumescent material in rebate. High-quality multi-chamber sealing profile adjustable fixed in the three-sided groove. |
| Hinges: | Object hinges type VB-3D 160 adjustable in three dimensions. Fixture element with slide bearings inside for smooth door movement. |
| Door Closer: | Slide rail door closer system acc. to EN 1154 silver coloured mounted on hinge side. |

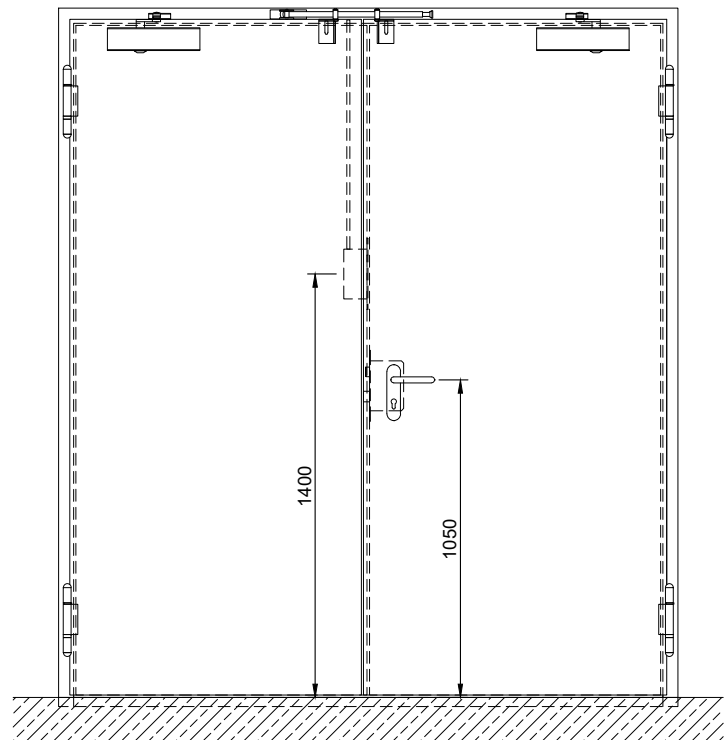
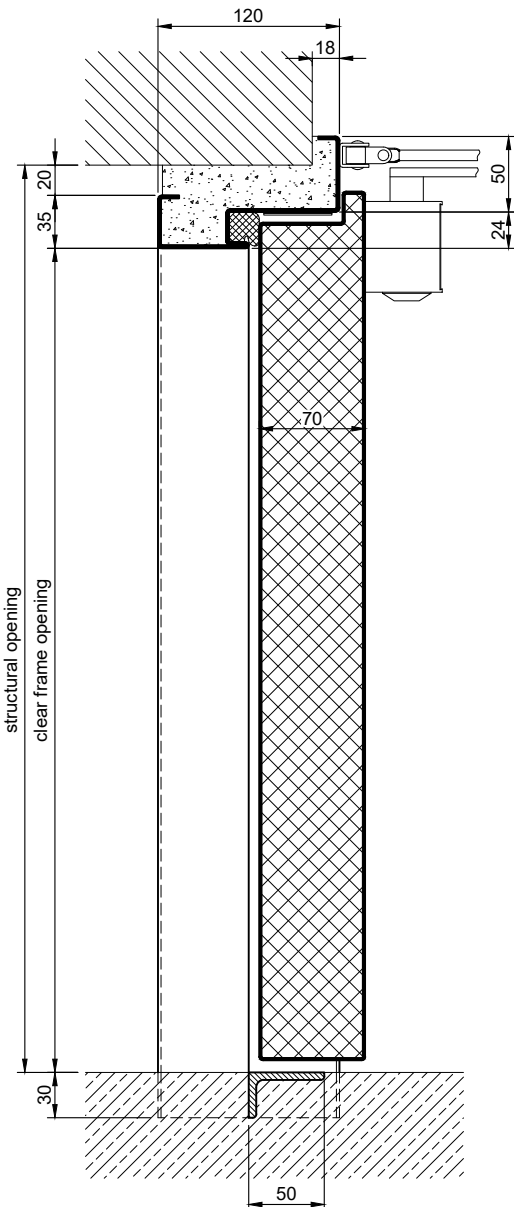
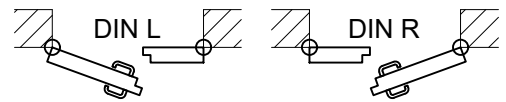
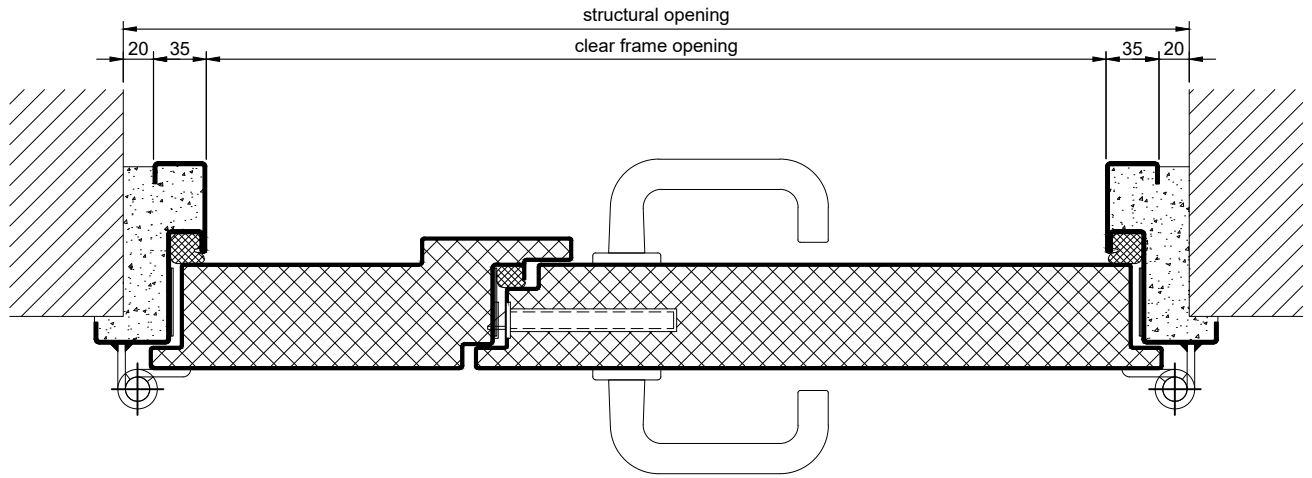
Alternative: PLANE Line PL 902 SUPERIOR with flush mounted optics

| | |
|---------------------|---|
| Frame: | 3-sided circumferential rebated PLANE Line special corner frame for flush mounted optics on hinge side. With visible, black coated intumescent material in rebate. High-quality multi-chamber sealing profile adjustable fixed in the three-sided groove. |
| Hinges: | Concealed hinge system adjustable in three dimensions. |
| Door Closer: | Concealed slide rail door closer system acc. to EN 1154 integrated in frame and door leaf. |

Supplementary Equipment

| | |
|-------------------------|---|
| Glazing: | F90 fire-protective double glazing two-sided fixed with profiled and visible screwed steel glazing bars. Minimum border 125 mm on side and top, base 300 mm. |
| Stainless Steel: | Material 1.4301 (V2A) or 1.4404 (V4A), Surface mill finish or brushed. |
| BUCHELE DELUXE: | The exclusive surface coating. |

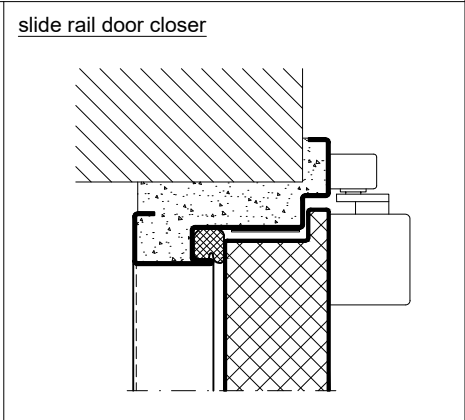
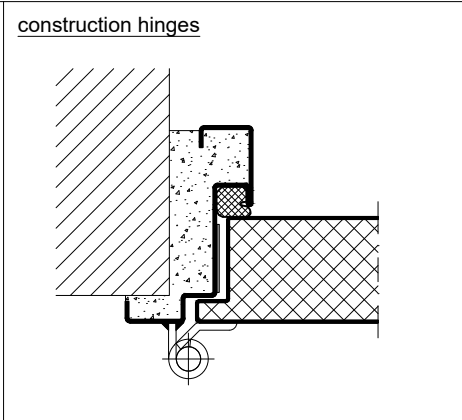
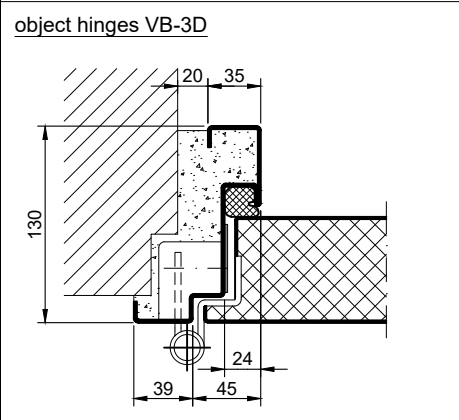
BASIC - Version



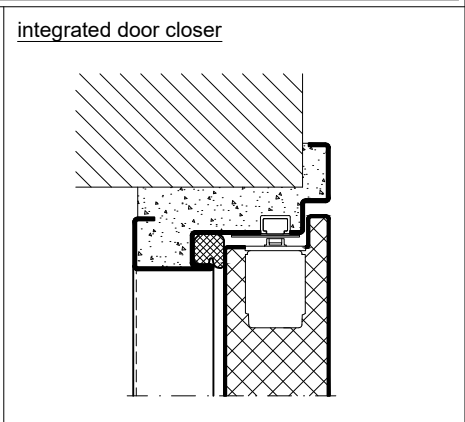
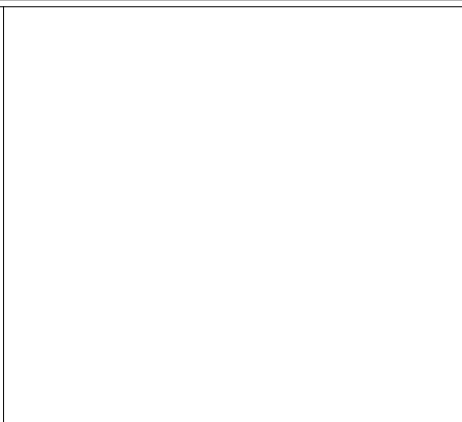
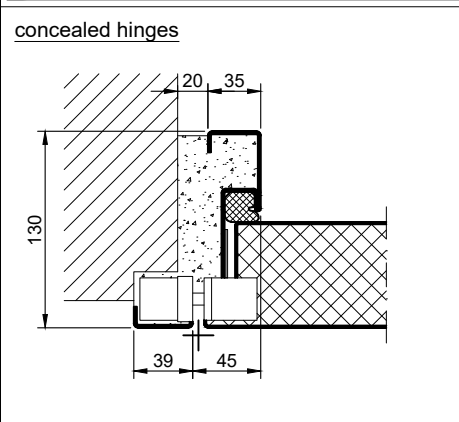
1.51.2 PLANE LINE PL 902-40 DB_EN

technical modifications reserved - edition 05/2024

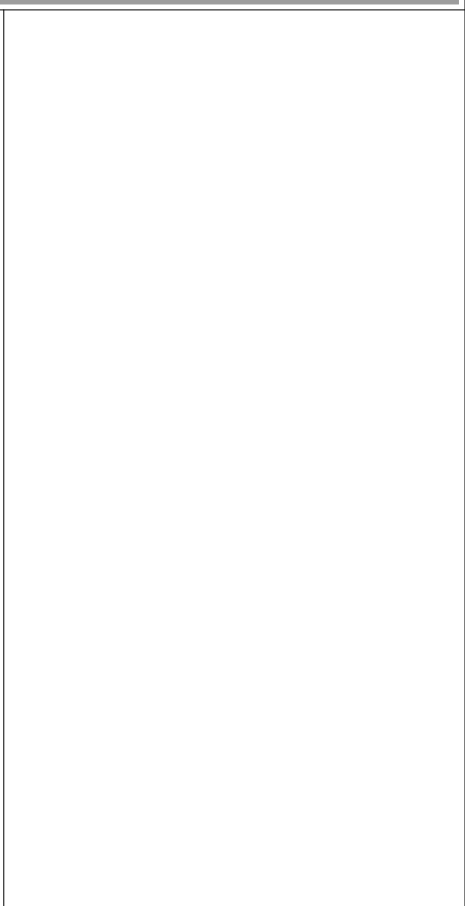
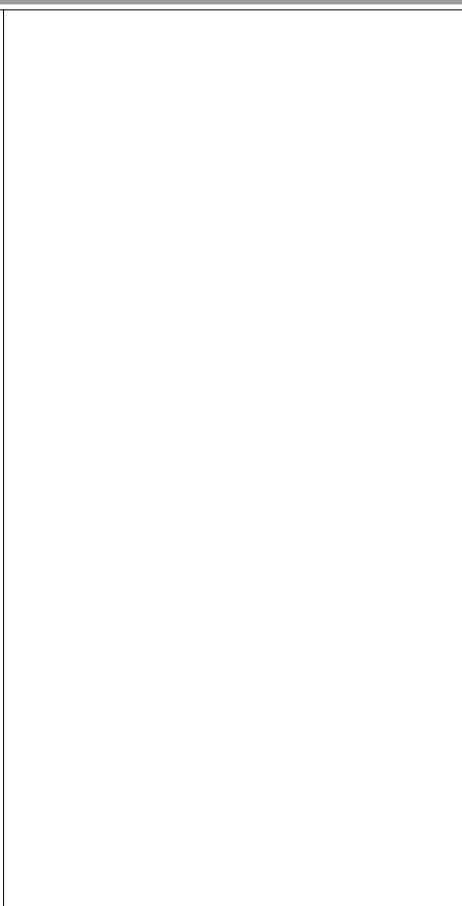
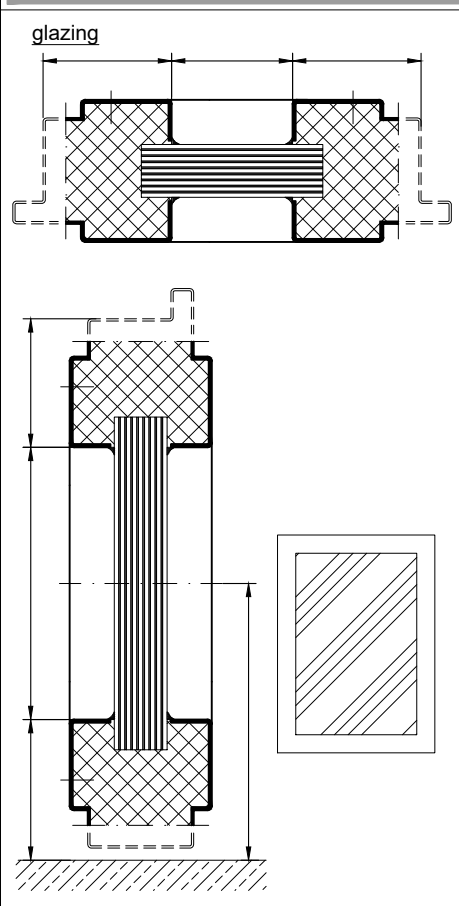
PREMIUM Version



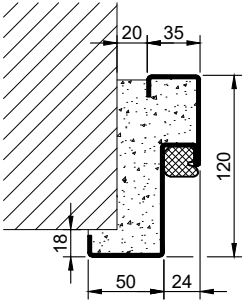
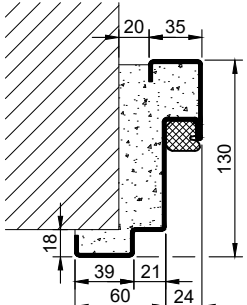
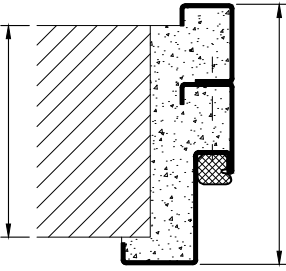
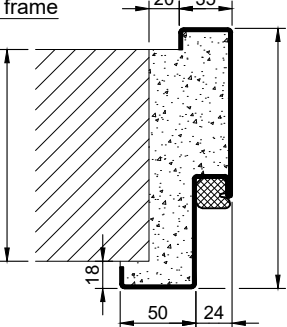
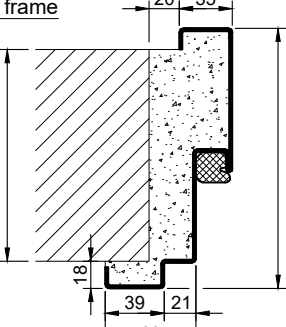
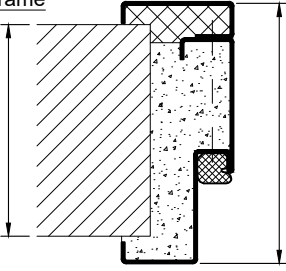
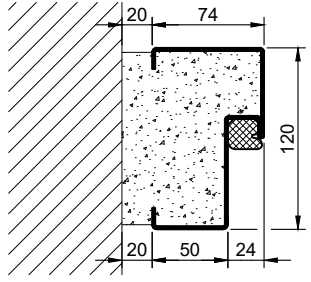
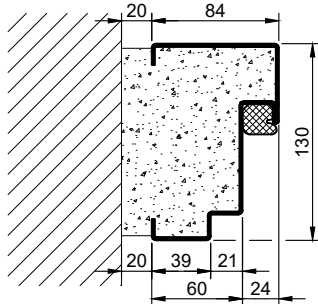
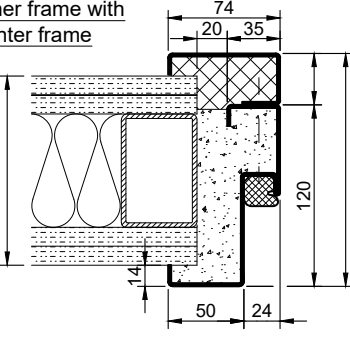
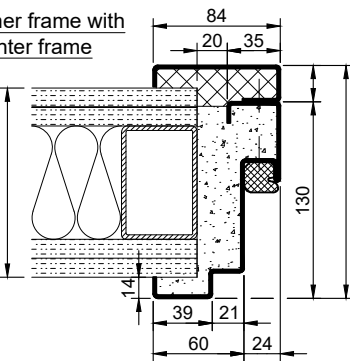
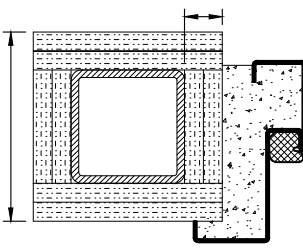
SUPERIOR Version



Options

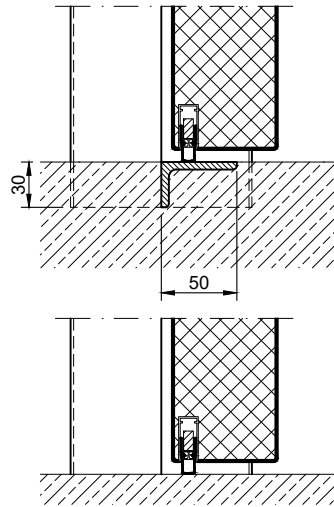


1.51.2 PLANE LINE PL 902-40 DB_EN

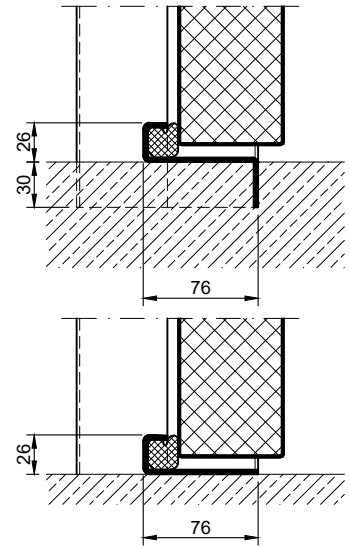
| Frames BASIC | Frames PREMIUM/SUPERIOR | Variants (illustration BASIC) |
|--|--|---|
| <p>corner frame</p>  | <p>corner frame</p>  | <p>corner frame with additional frame</p>  |
| <p>encasing frame</p>  | <p>encasing frame</p>  | <p>encasing frame with counter frame</p>  |
| <p>block frame</p>  | <p>block frame</p>  | |
| <p>corner frame with counter frame</p>  | <p>corner frame with counter frame</p>  | <p>corner frame at support / pillar</p>  |

Thresholds

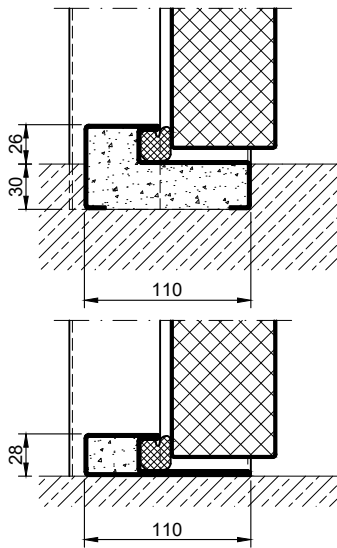
drop seal



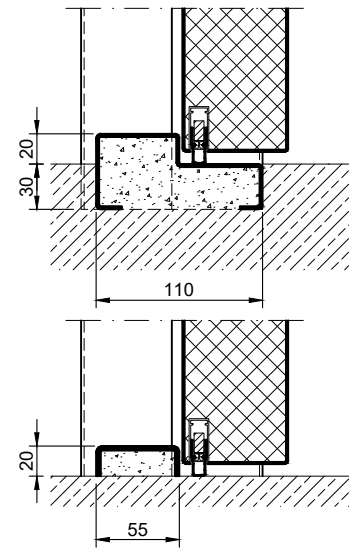
stop sill with seal



stop sill with seal



stop sill with drop seal



full sill

